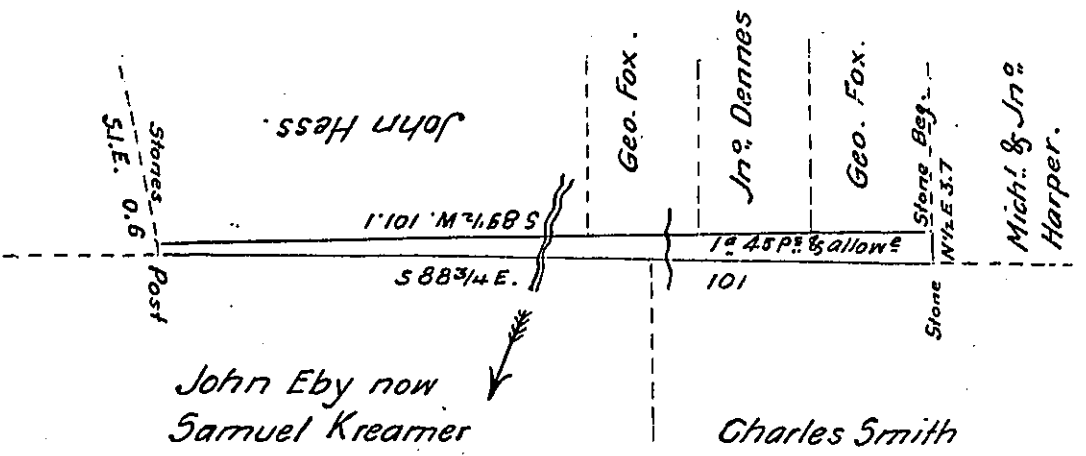


Scale of equal parts 30 p. to the inch



Draft of a tract of Land situate in Haines township Centre County containing one acre and forty five perches and allowance of six per cent for roads &c. Surveyed the 24th day of July A.D. 1848 in pursuance of a Warrant granted to John Dennes dated the 3^d day of January 1848 for 2 1/2 acres.

To John Laporte Esq. }
 Surveyor General. }

per Jacob Bollinger D.S.

IN TESTIMONY that the above is a copy of the original remaining on file in the Department of Internal Affairs of Pennsylvania, made conformably to an Act of Assembly approved the 16th day of February, 1833, I have hereunto set my Hand and caused the Seal of said Department to be affixed at Harrisburg, this twelfth day of October 1907

Henry Hoover
 Secretary of Internal Affairs.